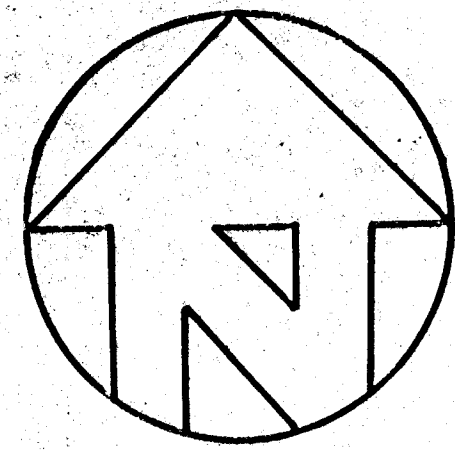


82-170



Scale 1" = 60'

LIGHTSEY ROAD

EXCLUDED AREA

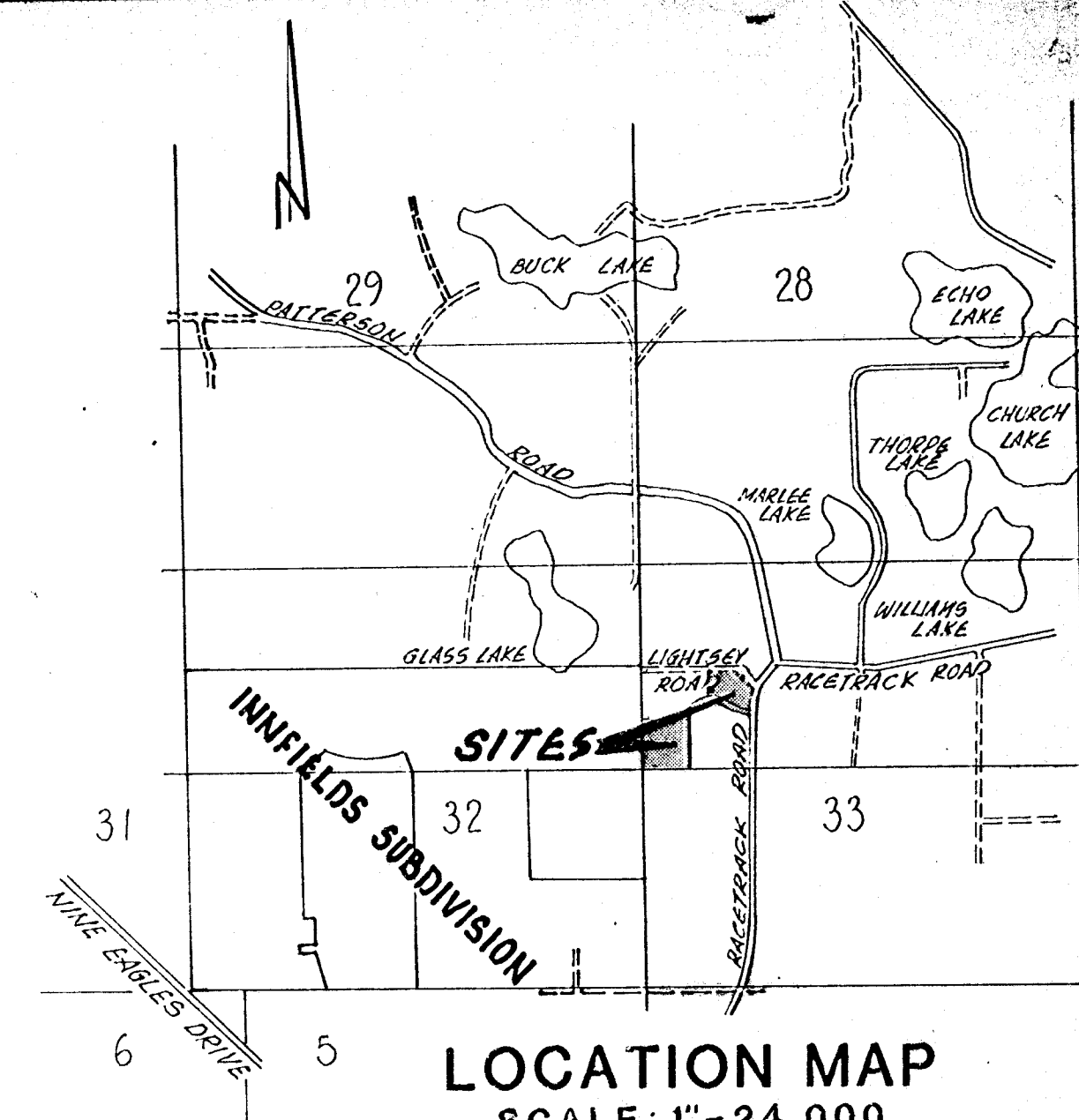
INNFIELDS DRIVE

EXISTING CREEK

ENVIRONMENTAL PRESERVE

EXCLUDED AREA

RACE TRACK ROAD



PRELIMINARY PLAT PLAN FOR PART OF SECTION 33, TOWNSHIP 27, SOUTH, RANGE 17 EAST, HILLSBOROUGH COUNTY, FLORIDA

EXISTING SITE CHARACTERISTICS

- TOPOGRAPHY-Flat to gentle slope
- SOIL TYPES-Uplands: Medium to fine grain clayey sand
Lowlands: Fine sand with organics
- VEGETATION-Uplands: Pine hammocks with sawpalmettos
Lowlands: Bay trees interspersed with scattered pine

LAND USE SCHEDULE

	ACRES
AREA A-5000 Sq. Ft. Business and Professional	9.74
1500 Sq. Ft. Veterinary Clinic	
1250 Sq. Ft. Management Office	
1250 Sq. Ft. Real Estate Office	
1000 Sq. Ft. Professional Office	
AREA B-7000 Sq. Ft. Neighborhood Retail	3.51
5000 Sq. Ft. Hardware and Feed Store	
2000 Sq. Ft. Convenience Store	

TOTAL 13.25 ACRES

○ LIGHT POLE

INNFIELDS

PROPOSED COMMERCIAL AI

HILLSBOROUGH COUNTY, FLORIDA
 ZONING REQUEST: A to C-P
 PETITION FILE NUMBER: 82-170
 PUBLIC HEARING DATE(S): May 27, 1982

This is to certify that this Site Development Plan has been reviewed by the Board of County Commissioners and the following action taken.

APPROVED AS SUBMITTED

APPROVED WITH CONDITIONS NOTED Petitioner shall donate sufficient ROW for 80' West of Race Track Road. Developer shall construct a six foot berm on W/S of Parcel A and N/S of Parcel B for buffer.

5/27/82 *Fran Dawn*
 Date of Order Chairman, Board of County Commissioners

BESSENT, HAMMACK & RUCKMAN
 CONSULTING AND DESIGN ENGINEERS
 TAMPA - JACKSONVILLE

4/7/82 *Alan R. Fitzpatrick*
 Date Attested to by: Clerk to Board of County Commissioners
 BOARD OF COUNTY COMMISSIONERS
 HILLSBOROUGH COUNTY, FLORIDA
 DOCUMENT No. 82-170

CERT. 82-0170

REVISED 5/11/82 TO EXCLUDE AREA 2